

## Information about La Crosse Blufflands South— Welch, Juniper Partners, and Frank Tracts

**Welch tract:** In 2003, Mississippi Valley Conservancy acquired this 20-acre property above the former Hillview Golf Course.

**Juniper Partners tract:** 26 acres

**Frank tract:** The 6 acres in the Donald and Barbara Frank tract were part of a larger property owned by Barbara's parents, William and Irene Schieche. Barb's family enjoyed using that land, much of which is now covered with condominiums, for hiking, sledding, and picking flowers and berries. In 2003 the Franks donated the remaining hillside and blufftop to the Bluffland Protection Program so that others can enjoy its trails and views.

### Activities allowed

Hiking, showshoeing, wildlife observation, hunting (subject to municipal ordinance)

### Activities NOT allowed

Biking, dog-walking

*The Frank tract is owned and protected by MVC. The Welch and Juniper Partners tracts are owned by the City of La Crosse and protected by MVC with a conservation easement.*

Please respect landowners near Conservancy tracts by staying on the trail and turning back when signs indicate private property.

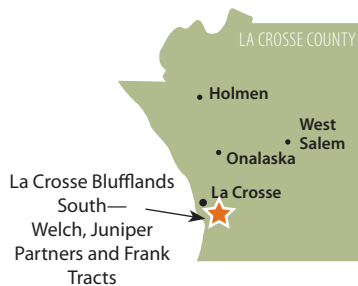
### Wildflowers and berries found on these properties

- Dutchman's breeches
- Yellow bellwort
- Shooting stars
- Bloodroot
- Wood anemone
- Pasqueflower
- Leadplant
- Downy painted cup
- Death camas
- Blackberries
- Dewberries



### Birds found on these properties

- Tufted titmouse
- Bald eagle
- Turkey vulture



1309 Norplex Drive, Suite 9  
La Crosse, WI 54601  
608-784-3606

[www.mississippivalleyconservancy.org](http://www.mississippivalleyconservancy.org)

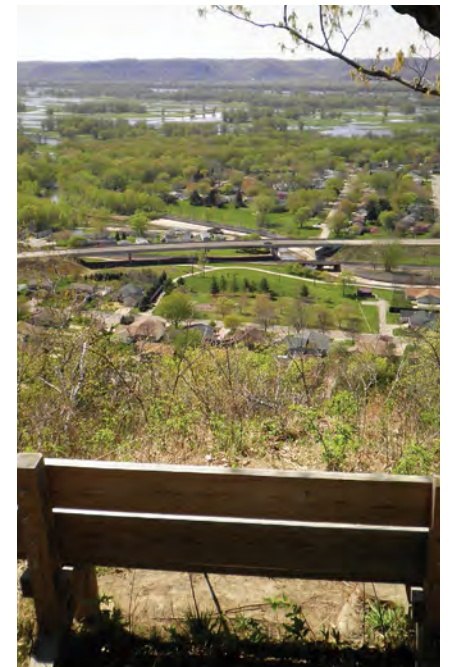
2015-0123



HIKING MAP

## La Crosse Blufflands South— Welch, Juniper Partners, and Frank Tracts

La Crosse County





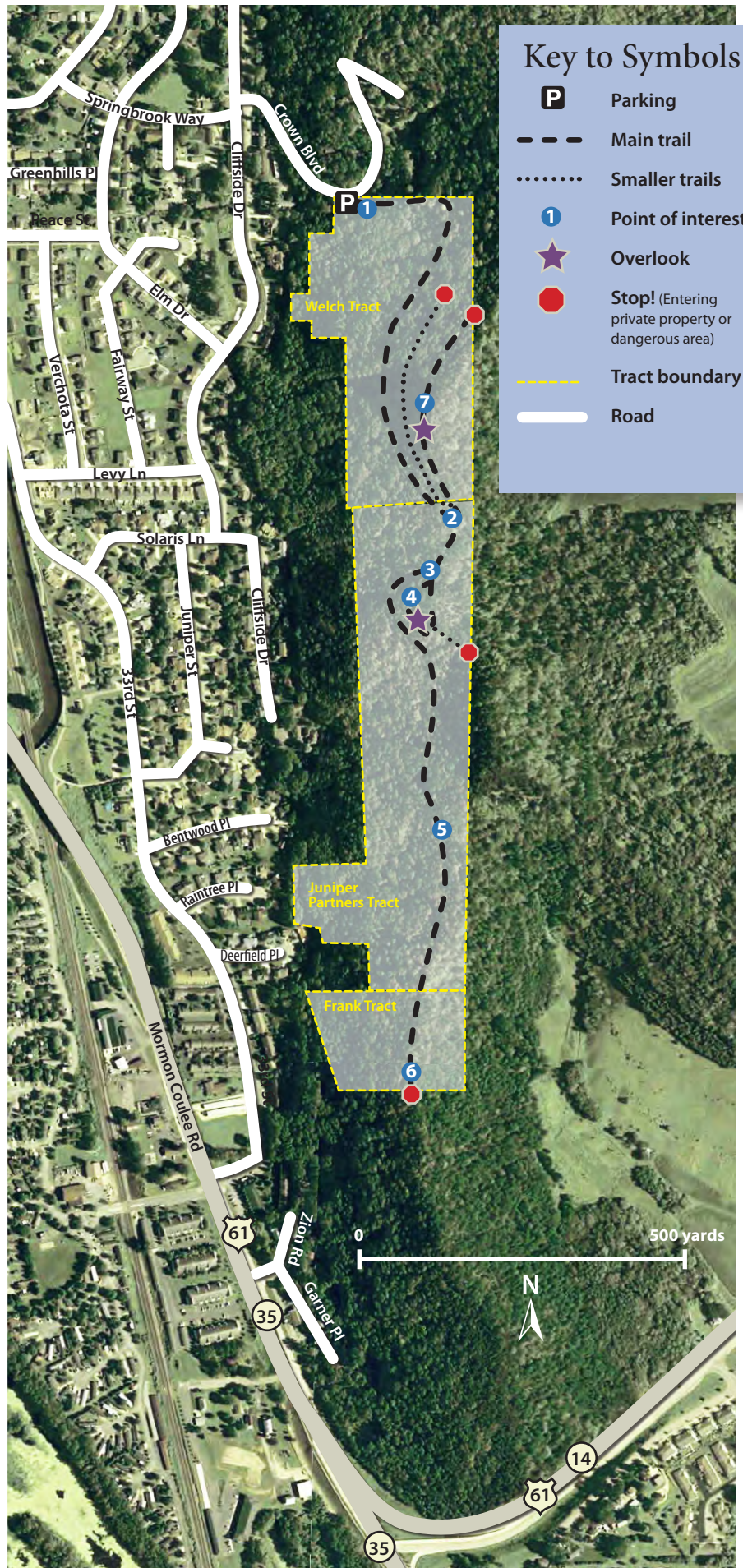
# Hiking La Crosse Blufflands South— Welch, Juniper Partners, and Frank Tracts

Enjoy a challenging out-and-back hike (about 1 mile each way) atop a bluff overlooking Mormon Coulee Road and the backwaters of the Mississippi River. Two overlooks provide magnificent views. Expect to see wildflowers and see and hear birds.

**How to get to the trailhead/parking lot from the intersection of Losey Boulevard and Ward Avenue:** Head east on Ward Ave. to 33rd St. Turn right on 33rd St. and follow it south to Robinsdale Ave. Turn left on Robinsdale Ave. and follow it to Cliffside Dr. Turn right on Cliffside Dr. Turn left on Crown Blvd. and park along the road, or go straight to Springbrook Way, turn right, and park along the road.

- 1 Start at the sign on Crown Blvd.  
43° 46.198'N, -91° 12.061'W
- 2 Trail splits. A wide out-and-back old logging trail goes north and an out-and-back footpath goes north between the two trails.  
43° 45.878'N, -91° 12.007'W
- 3 A narrow trail continues to the right (south) along the face of the bluff; a short trail goes straight to a bench with a view.  
43° 45.845'N, -91° 12.032'W
- 4 A bench and overlook across from Mormon Coulee viaduct.  
43° 45.815'N, -91° 12.052'W
- 5 The trail moves from the face of the bluff to the bluff/ridge top and continues south.  
43° 45.660'N, -91° 12.016'W
- 6 From here you can see Fiesta Mexicana to the west on Mormon Coulee Road.  
43° 45.448'N, -91° 12.055'W
- 7 High, rocky point with a view, opposite Walmart.  
43° 45.984'N, -91° 12.041'W

Please respect landowners near Conservancy tracts by staying on the trail and turning back when signs indicate private property.



Base map courtesy of USGS